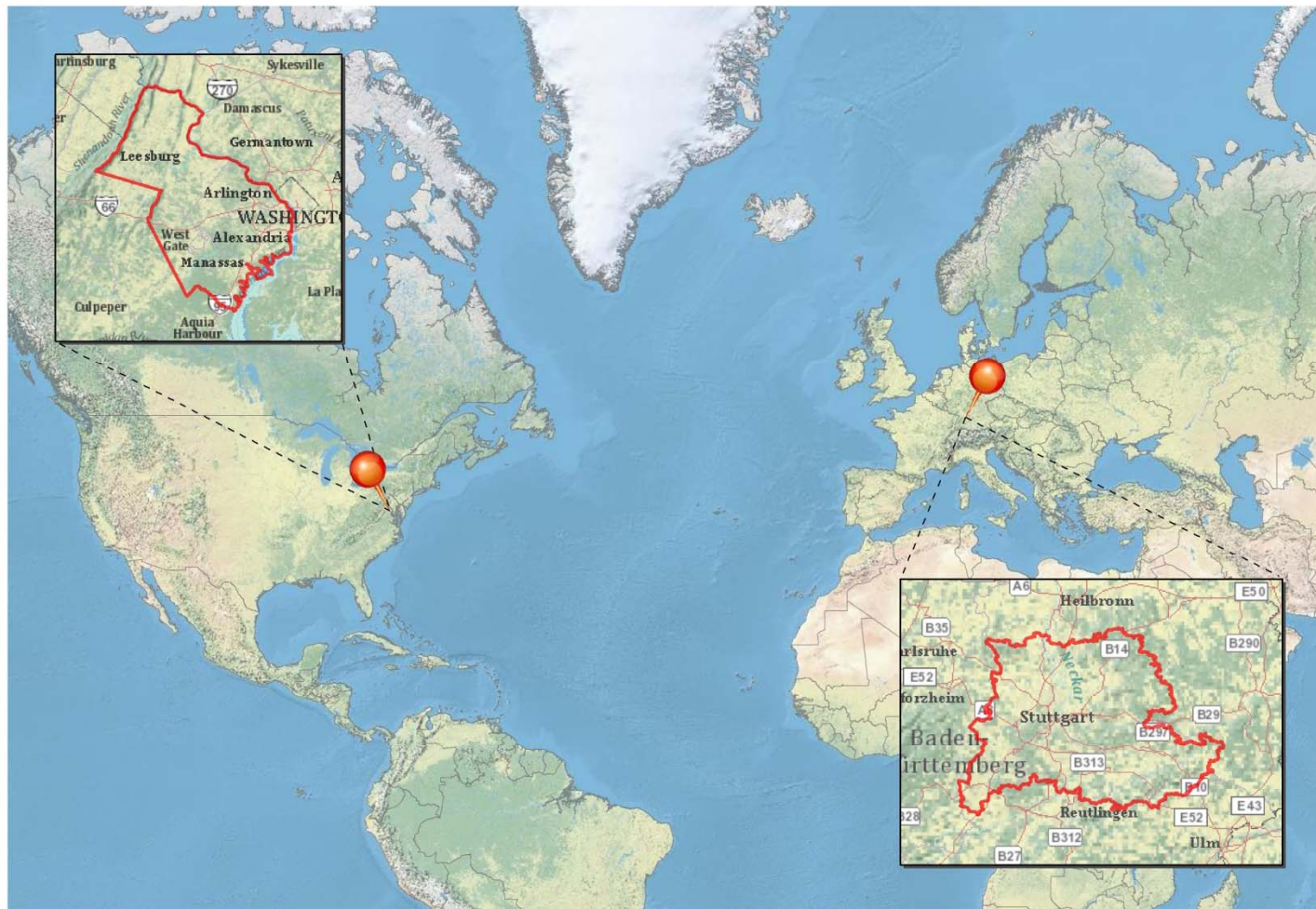


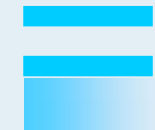


# *Trans-atlantic cooperation – Northern Virginia Regional Commission Verband Region Stuttgart*



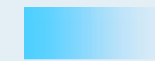


## *Similarities & differences*



2,1 million inhabitants (strong growth)

2,6 million inhabitants (moderate growth)

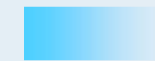


3.3 sqkm (1.304 sqm)

3.6 sqkm (1.410 sqm)



Densely populated



Strong economy



Legal status, competences



Instruments





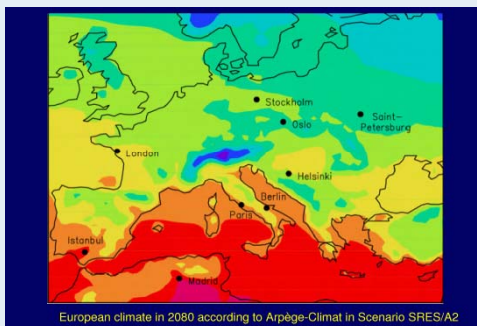
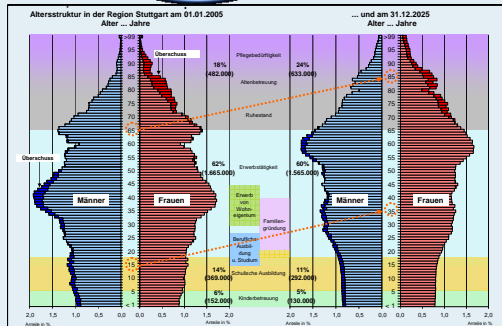
# Different scope of options – same challenges



Globalization  
and international competition

Demographic development

Sustainable  
energy supply





## ***Stuttgart Region: Motivation***

- “Birthplace” of the automobile  
Car industry and suppliers are significant  
(GDP and jobs)

- Stuttgart as example for energy efficiency
  - > transport and mobility
  - > research and development
  - > e-mobility

- Innovation as part of the image  
Locational factor, human resources

- Renewables and efficiency  
Invest in infrastructure – not consumption





# *Land use planning*

## *Adaptation of urban structures*



Development along  
light railway  
corridors

Dense structure =  
short distances

Retail facilities =  
close to housing



Verband Region  
Stuttgart

2006/ 9/14 10:45



# *Sustainable mobility: from combustion engine to electro-mobility*



Pilot project use of e-powered cars and bikes

Providing facilities

Proof practicability functionality





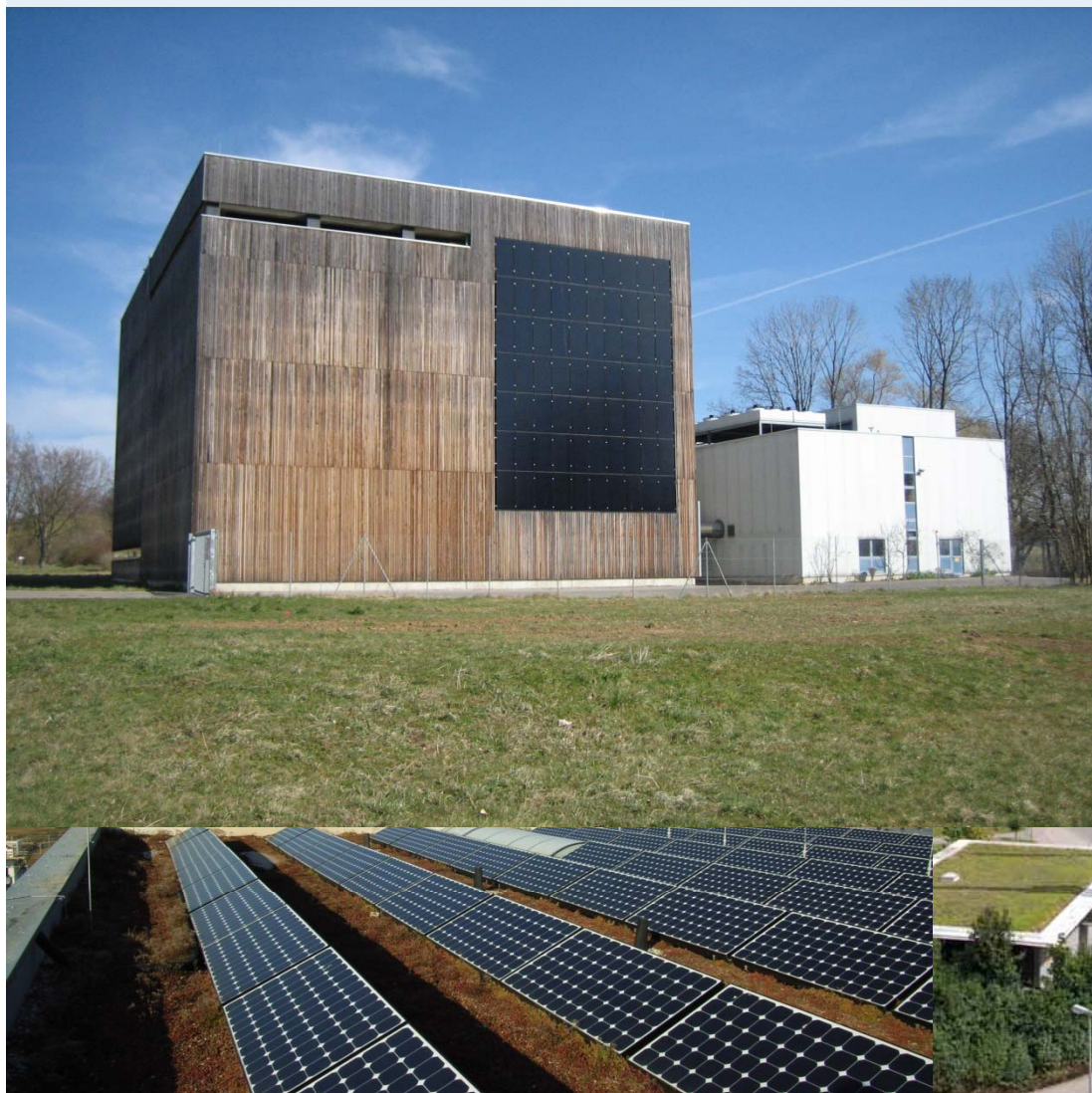


# ***Renewable energies: potentials, locations, business models***

Evaluate potentials  
of renewable  
energies

Provide locations

Support cities in  
business models







## *Low-energy housing*



Financial support  
for new buildings  
and retrofitting

Public buildings as  
pilot project –  
but mandatory  
standards

Stuttgart Regions  
prices for houses /  
rents are high –  
low energy cost  
can compensate.







## *Cooperation – goal oriented*

### “Strategic” level

exchange and discussion among politicians  
information on best practices

### Implementation

exchange of practitioners, common projects  
and detailed studies of examples

### Exchange is **reciprocal** -

Not replication but adaptation,

### Future aspects:

public transport, , e-mobility infrastructure,  
efficiency in urban structures

R&D - in the fields of renewables, efficiency.

